

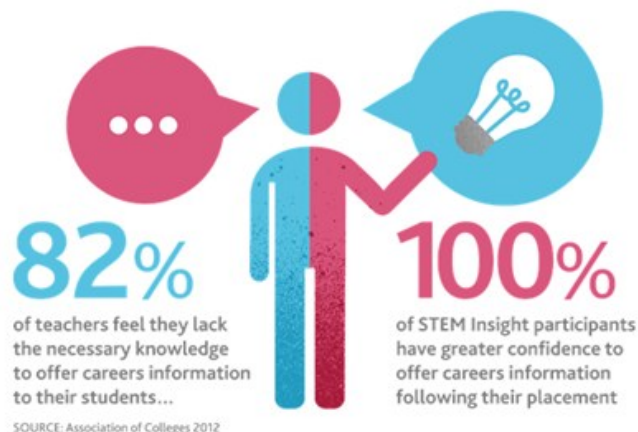


STEM INSIGHT into Modern Industry



Learn about how businesses work, what roles and skills are needed, the breadth of career possibilities and the variety of routes into jobs, particularly technical paths and apprenticeships.

STEM Insight placements equip teachers, technicians and careers staff with real-life knowledge and experiences, helping to bring careers to life in the classroom.



This residential course will provide the opportunity to get hands on experience of a range of businesses and employers in the South West of Scotland including Merck, Scottish Power, GE Caledonian, FMC Alginates, Grants Distillers, Emergency One, and NATS.

Educators will develop an understanding of the skills required to be successful in industry, enabling them to take these messages back to their school and thus enhancing the learning experiences of young people.



To register interest please email Insight@sserc.scot

| STEM Insight Residential | | |
|---------------------------------|--|---|
| When | Part 1 | 14 Nov 2018, 4pm – 16 Nov 2018, 4pm |
| | Part 2 | 12 Feb 2019, 9am – 4.30pm |
| | Recall | 21 Mar 2019, 9am – 3.00pm |
| Where | Dumfries House & site visits | https://dumfries-house.org.uk/education |
| Cost | £450 (£250 & VAT course admin fee payable to STEM Learning) (£200 meals & accommodation payable to SSERC) | |
| Funding (LA Schools) | £1000 Project Enthuse available | On successful completion of all 5 days |
| Closing | 1 November 2018 | |



2 Pitreavie Court South Pitreavie Business Park Dunfermline KY11 8UU
 Telephone -01383 626070 enquiries@sserc.scot www.sserc.scot

SSERC is a Company Limited by Guarantee (Scottish Company No. SC131509) and a registered educational charity (Scottish Charity No. SCO17884)

Registered Office – 5th Floor, Quartermile Two, 2 Lister Square, Edinburgh EH3 9GL